

**SRI SHIRDI SAI BABA TEMPLE
ADDENDUM No. 1
12 December 2008**

This Addendum forms a part of Contract and clarifies, corrects or modifies original Bid Documents.

A. General Notes:

For the purposes of the bid, assume that all permit and inspection fees will be paid by the owner, and should not be included in the bid.

For the purposes of the bid, assume that construction and material testing services for the project will be paid for by the owner, and should not be included in the bid.

For the purposes of the bid, assume that performance and payment bonds are not required for this project, and should not be included in the base bid. Provide with the bid a price for adding performance and payment bonds, should the owner request this addition.

Provide with the bid a statement of the insurance coverage that would be carried by the bidder for this project.

B. Project Manual Revisions:

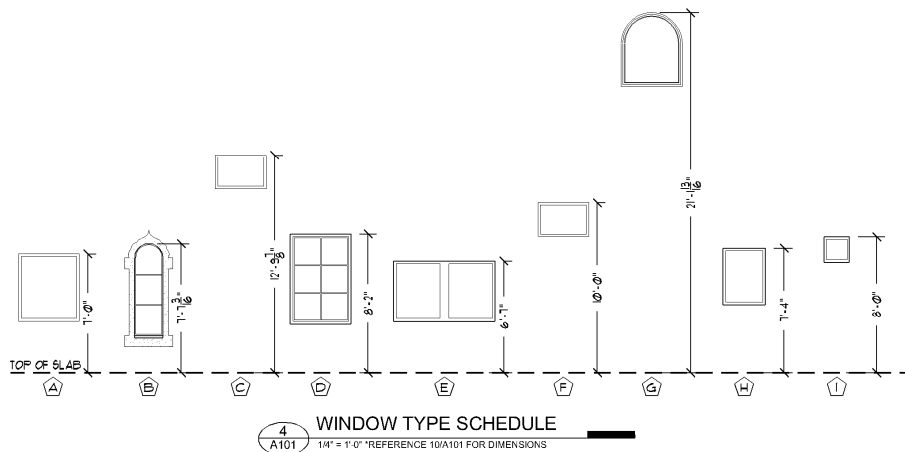
Revise the Bid Form to reflect the following amendment of the bid date: "Bids are due at the offices of MWM DesignGroup, Inc., 7700 Chevy Chase Boulevard, Suite 100, Austin, Texas 78752, by 2 p.m., Austin time, on 18 December 2008".

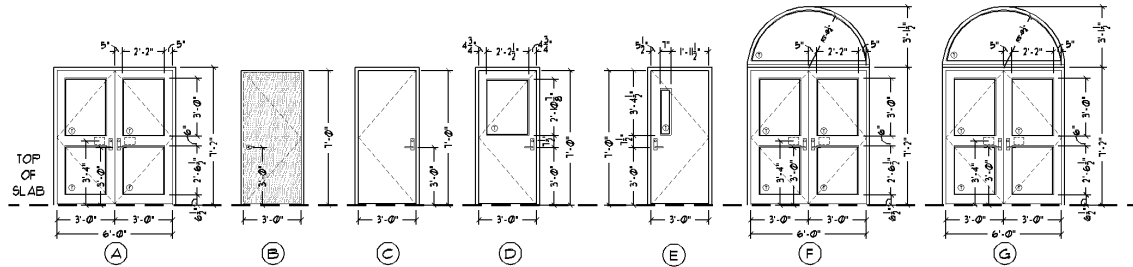
Add the following note to the bid form: "Each bidder shall submit with their bid a unit price for the installation of two (2) 4" PVC conduits, in accordance with the Pedernales Electric Cooperative's Line Extension Policy, in order to provide the infrastructure required to bring electric service to the site. The length of the conduit run required will be determined by PEC. A preliminary assessment indicates that approximately 450 liner feet of run will be required."

Additional revisions to the Project Manual are summarized under the response to RFIs, below.

C. Drawing Revisions:

Amend sheet A101 as follows:





5 DOOR TYPE SCHEDULE

5
A101 114" = 1'-0"

HARDWARE GROUP o

TYPE	NUMBER	MANUFACTURER	MODEL	FINISH
BUTTS	3 PAIR	KAWNEER BALL BEARING (NRP)	STANDARD	
DEADBOLT	1	FALCON	D841BD ICC/7	32D
OPENER	2	FALCON (MONARCH)	712 (QUANTUM)	32D
PANIC	2	FALCON (MONARCH)	18-C	32D
CLOSER	2	KAWNEER	NORTON ADJ.	AL
WEATHERSTRIP	1	KAWNEER	STANDARD	
SWEEP	2	KAWNEER	EPDM BLADE	AL

HARDWARE GROUP b

TYPE	NUMBER	MANUFACTURER	MODEL	FINISH
BUTTS	3 PAIR	HAGER	BB1191	32D
LOCKSET	2	FALCON	LM18	32D
FLOOR STOP	2			

HARDWARE GROUP c

TYPE	NUMBER	MANUFACTURER	MODEL	FINISH
BUTTS	1 1/2 PAIR	HAGER	BB1191	32D
LOCKSET	1	FALCON	LM521 (QUANTUM)	32D
FLOOR STOP	1			

HARDWARE GROUP d

TYPE	NUMBER	MANUFACTURER	MODEL	FINISH
BUTTS	1 1/2 PAIR	HAGER	BB1191	32D
LOCKSET	1	FALCON	LM561 (QUANTUM)	32D
FLOOR STOP	1			

HARDWARE GROUP e

TYPE	NUMBER	MANUFACTURER	MODEL	FINISH
BUTTS	1 1/2 PAIR	HAGER	BB1191	32D
DEADBOLT	1	FALCON	D841BD ICC/7	32D
LOCKSET	1	FALCON	LM581 (QUANTUM)	32D
THRESHOLD	1	NGP	896	AL
WEATHERSTRIP	1	NGP	160VA	AL
SWEEP	1	NGP	102VA	AL
FLOOR STOP	1			

HARDWARE GROUP f

TYPE	NUMBER	MANUFACTURER	MODEL	FINISH
BUTTS	1 1/2 PAIR	HAGER	BB1191	32D
LOCKSET	1	FALCON	LM101	32D
FLOOR STOP	1			

HARDWARE GROUP g

TYPE	NUMBER	MANUFACTURER	MODEL	FINISH
BUTTS	1 1/2 PAIR	HAGER	BB1191	32D
LOCKSET	1	FALCON	LM561 (QUANTUM)	32D
CLOSER	1	LCN	4041	ALUMINUM PC
FLOOR STOP	1			

HARDWARE GROUP h

TYPE	NUMBER	MANUFACTURER	MODEL	FINISH
BUTTS	3 PAIR	HAGER	BB1191	32D
LOCKSET	2	FALCON	LM101	32D
FLOOR STOP	1			
ROLLER LATCH	2			

HARDWARE GROUP i

TYPE	NUMBER	MANUFACTURER	MODEL	FINISH
BUTTS	1 1/2 PAIR	HAGER	BB1191	32D
LOCKSET	1	FALCON	LM301	32D
FLOOR STOP	1			

6 HARDWARE SCHEDULE

6
A101 NTS

ROOM FINISH SCHEDULE									REMARKS
ROOM NAME	FLOOR	BASE	WALLS		CEILING		HEIGHT		
			MTL	FINISH	MTL	FINISH			
A100 SANCTUARY	MBL	MBL	GYP	PT	GYP	PT	VARIABLE	GRON VAULT (MAX. HT. 20'-4")	
A101 TEMPLE HALL	MBL	MBL	GYP	PT	GYP	PT	VARIABLE	SEE 1/A300 OR 1/A301 (MAX. HT. 22'-1")	
A102 PRIEST'S ROOM	VCT	RB	GYP	PT	GYP	PT	8'-0"	4" RUBBER BASE	
A103 JANITOR CLOSET	CNC	RB	WP/GYP	PT	OA/SD	-	OA/SD		
A104 SPRINKLER RISER ROOM	CNC	-	GYP	-	OA/SD	-	OA/SD		
A105 STORAGE	VCT	RB	GYP	PT	GYP	PT	8'-0"	4" RUBBER BASE	
A106 CHILDREN'S ROOM	CPT	RB	GYP	PT	ACT	-	8'-0"	4" RUBBER BASE	
A107 OFFICE	CPT	RB	GYP	PT	ACT	-	8'-0"	4" RUBBER BASE	
A108 VESTIBULE	CT	CT	GYP	PT	GYP	PT	10'-8 1/2"		
A109 CASHIER	CPT	RB	GYP	PT	ACT	-	8'-0"	4" RUBBER BASE	
B100 HOMA KUNDA	CNC	-	CMU	-	CD, T&G	STN	10'-5 1/2"		
C100 DHUNI	CNC	-	CMU	-	CD, T&G	STN	11'-1 1/2"		
D100 CORRIDOR	VCT	RB	GYP	PT	ACT	-	9'-0"	4" RUBBER BASE	
D101 KITCHEN	VCT	CT	GYP	CT, PT	ACT	-	9'-0"	SEE INT. ELEV. FOR WAINSCOT CONFIG.	
D102 PANTRY	VCT	RB	GYP	PT	ACT	-	9'-0"	4" RUBBER BASE	
D103 MEN'S RESTROOM	CT	CT	WP/GYP	PT	WP/GYP	PT	8'-6"	SEE INT. ELEV. FOR WAINSCOT CONFIG.	
D104 WOMEN'S RESTROOM	CT	CT	WP/GYP	PT	WP/GYP	PT	8'-6"	SEE INT. ELEV. FOR WAINSCOT CONFIG.	
E100 MEDITATION HALL	CPT	RB	CMU, GYP	-	CD, T&G	STN	10'-5 1/2"	PAINTED GYP. BD. ON CLOSET WALLS	

8
A101

ROOM FINISH SCHEDULE

1/4" = 1'-0"

DOOR SCHEDULE													REMARKS	HARDWARE
DOOR NO.	TYPE	DOOR					DETAILS							
		WIDTH	HEIGHT	THICKNESS	MATERIAL	FINISH	GLAZING	FRAME	HEAD	JAMB	SILL			
1	F	6'-0"	7'-0"	1-3/4"	AL	PT	TEMPER	PT AL	MAN. SF	MAN. SF	MAN. SF	MAN. SF	KAWNEER DBL. DOORS STAN. ENT. 5000 SERIES W/ FRAME + TRANSOM	a
2	G	6'-0"	7'-0"	1-3/4"	SCW	PT	TEMPER	PT AL	MAN. SF	MAN. SF	1/4/A303	1/4/A303	KAWNEER DBL. DOORS STAN. ENT. 5000 SERIES W/ FRAME + TRANSOM	b
3	B	3'-0"	7'-0"	1-3/4"	SCW	STN	-	PT AL	1/A303	8/A303	12/A303	12/A303	-	c
4	B	3'-0"	7'-0"	1-3/4"	SCW	STN	-	PT AL	1/A303	8/A303	12/A303	12/A303	-	c
5	A	6'-0"	7'-0"	1-3/4"	AL	PT	TEMPER	PT AL	MAN. SF	MAN. SF	MAN. SF	MAN. SF	-	d
6	A	6'-0"	7'-0"	1-3/4"	AL	PT	TEMPER	PT AL	MAN. SF	MAN. SF	MAN. SF	MAN. SF	KAWNEER DBL. DOORS STAN. ENT. 5000 SERIES W/ FRAME	d
7	B	3'-0"	7'-0"	1-3/4"	SCW	STN	-	PT AL	1/A303	8/A303	11/A303	11/A303	-	d
8	B	3'-0"	7'-0"	1-3/4"	SCW	STN	-	PT AL	1/A303	8/A303	10/A303	10/A303	-	d
9	C	3'-0"	7'-0"	1-3/4"	HM	PT	-	PT HM	MAN. SF	MAN. SF	MAN. SF	MAN. SF	-	e
10	B	3'-0"	7'-0"	1-3/4"	SCW	STN	-	PT AL	1/A303	8/A303	11/A303	11/A303	-	c
11	B	3'-0"	7'-0"	1-3/4"	SCW	STN	-	PT AL	1/A303	8/A303	13/A303	13/A303	-	f
12	B	3'-0"	7'-0"	1-3/4"	SCW	STN	-	PT AL	1/A303	8/A303	13/A303	13/A303	-	f
13	A	6'-0"	7'-0"	1-3/4"	AL	PT	TEMPER	PT AL	MAN. SF	MAN. SF	MAN. SF	MAN. SF	-	d
14	A	6'-0"	7'-0"	1-3/4"	AL	PT	TEMPER	PT AL	MAN. SF	MAN. SF	MAN. SF	MAN. SF	KAWNEER DBL. DOORS STAN. ENT. 5000 SERIES W/ FRAME	d
15	B	3'-0"	7'-0"	1-3/4"	SCW	STN	-	PT AL	1/A303	8/A303	9/A303	9/A303	-	f
16	B	3'-0"	7'-0"	1-3/4"	SCW	STN	-	PT AL	1/A303	8/A303	9/A303	9/A303	-	f
17	A	6'-0"	7'-0"	1-3/4"	AL	PT	TEMPER	PT AL	MAN. SF	MAN. SF	MAN. SF	MAN. SF	KAWNEER DBL. DOORS STAN. ENT. 5000 SERIES W/ FRAME	d
18	B	3'-0"	7'-0"	1-3/4"	SCW	STN	-	PT AL	1/A303	8/A303	11/A303	11/A303	-	g
19	B	6'-0"	7'-0"	1-3/4"	SCW	STN	-	PT AL	1/A303	8/A303	N/A	N/A	DOUBLE DOORS	h
20	B	3'-0"	7'-0"	1-3/4"	SCW	STN	-	PT AL	1/A303	8/A303	11/A303	11/A303	-	g
21	A	6'-0"	7'-0"	1-3/4"	AL	PT	TEMPER	PT AL	MAN. SF	MAN. SF	MAN. SF	MAN. SF	KAWNEER DBL. DOORS STAN. ENT. 5000 SERIES W/ FRAME	d
22	B	3'-0"	7'-0"	1-3/4"	HM	PT	TEMPER	PT HM	MAN. SF	MAN. SF	MAN. SF	MAN. SF	-	c
23	B	3'-0"	7'-0"	1-3/4"	SCW	STN	-	PT AL	1/A303	8/A303	N/A	N/A	-	f
24	E	3'-0"	7'-0"	1-3/4"	HM	PT	TEMPER	PT HM	MAN. SF	MAN. SF	MAN. SF	MAN. SF	INSULATED HM EXTERIOR DOOR	e
25	B	3'-0"	7'-0"	1-3/4"	SCW	STN	-	PT AL	1/A303	8/A303	NGP408	NGP408	-	i
26	B	3'-0"	7'-0"	1-3/4"	SCW	STN	-	PT AL	1/A303	8/A303	NGP408	NGP408	-	i
27	C	3'-0"	7'-0"	1-3/4"	HM	PT	-	PT HM	MAN. SF	MAN. SF	MAN. SF	MAN. SF	-	e
28	C	3'-0"	7'-0"	1-3/4"	HM	PT	-	PT HM	MAN. SF	MAN. SF	MAN. SF	MAN. SF	-	e
29	B	3'-0"	7'-0"	1-3/4"	SCW	STN	-	PT AL	1/A303	8/A303	N/A	N/A	-	g
30	B	3'-0"	7'-0"	1-3/4"	SCW	STN	-	PT AL	1/A303	8/A303	9/A303	9/A303	-	f

9
A101

DOOR SCHEDULE

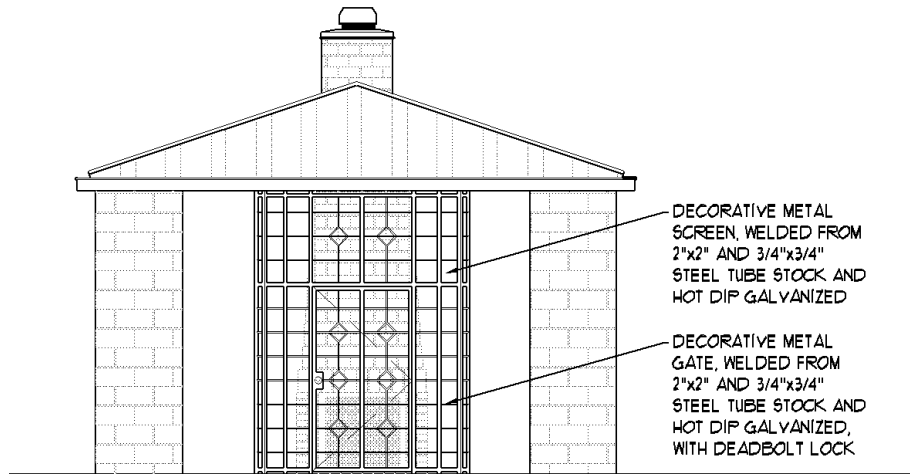
1/4" = 1'-0"

WINDOW SCHEDULE							
TYPE	NOMINAL SIZE			MATERIAL	FINISH	GLAZING	REMARKS
	WIDTH	HEIGHT	THICK- NESS				
A	3'-7"	4'-0"	4 1/2"	AL	PT	INS	JELD-WEN 500 SERIES OR APPROVED EQUAL
B	2'-0"	5'-6"	4 1/2"	AL	PT	INS	JELD-WEN 500 SERIES OR APPROVED EQUAL
C	3'-0"	2'-0"	4 1/2"	AL	PT	INS	JELD-WEN 500 SERIES OR APPROVED EQUAL
D	3'-7"	5'-4"	4 1/2"	AL	PT	INS	JELD-WEN 500 SERIES OR APPROVED EQUAL
E	6'-0"	3'-7"	4 1/2"	AL	PT	INS	JELD-WEN 500 SERIES OR APPROVED EQUAL (OPERABLE)
F	3'-0"	2'-0"	4 1/2"	AL	PT	INS	JELD-WEN 500 SERIES OR APPROVED EQUAL
G	3'-7 1/4"	3'-4 1/2"	4 1/2"	AL	PT	INS	JELD-WEN 500 SERIES OR APPROVED EQUAL
H	2'-6"	3'-0"	4 1/2"	AL	PT	INS	JELD-WEN 500 SERIES OR APPROVED EQUAL
I	1'-6"	1'-6"	4 1/2"	AL	PT	INS	JELD-WEN 500 SERIES OR APPROVED EQUAL

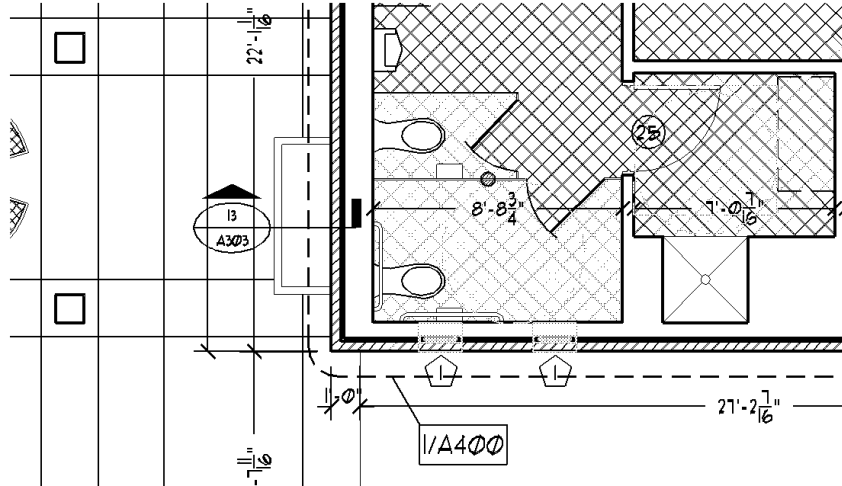
10
A101 WINDOW SCHEDULE 1/4" = 1'-0"

D. Response to RFIs:

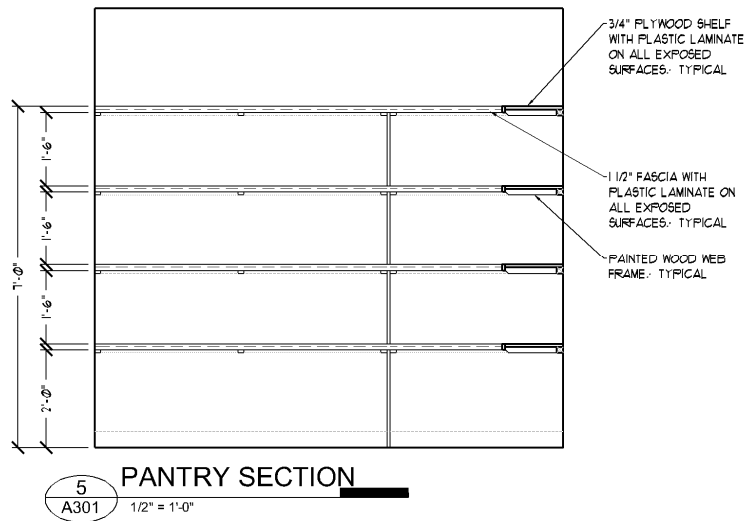
1. *Sheet A101 room finish schedule is incomplete.* The room finish schedule for the project is included above.
2. *Sheet A100 Dhuni screen for the fireplace is not detailed.* The following detail illustrates the screen for the Dhuni. The screen for the shrine is similar.



3. *There are numerous dimensions and material notations missing from the set.* The bid documents, as clarified by this addendum, should be sufficient for pricing the project. The final construction drawings (the approved building permit drawings), include additional notes and dimensions.
4. *The Footbath Detail 13/A303 is not noted anywhere else on the plans.* The attached detail from 1/A100 locates the footwash. This detail also identifies the windows in the toilet rooms as type "I".



5. *What type of roof sheathing and vapor barrier is to be installed? All of the metal roofs consist of structural panels mechanically fastened to purlins. There is no sheathing and no vapor barrier associated with this system.*
6. *Room D102/Pantry shows shelves on the plan. Spec? Quantity? The following detail clarifies the pantry shelving.*



7. *Minimal information is provided on the Gopuram, the (4) ornamental elements around the Gopuram, and the Dome: Is this a proprietary supplier? By owner? How are these attached, flashed, and*

waterproofed to the roof below? For pricing purposes, include in the base bid the provision of a gopuram and corner pavilions in accordance with the proposal below (including Alternate A) from INDesign. Their proposal includes the design of the mounting details for the gopuram.

The dome shown on the plans is a model A-123 fiberglass dome (4'-6" high, 9'-0" diameter) manufactured by Architectural Fiberglass, Inc. of Cleveland, Ohio (www.fiberglass-afi.com; 216-641-8300). Price this dome or an approved equal.

INDesign

Fiberglass Specialties Distributor

November 24, 2008

Proposal for Gopuram
w/o custom finial (brass top)

To: Craig Edwards

Good morning Craig. Here is pricing on custom gopuram for your new temple without FSI doing the top portion.

Our proposal is based on latest drawings from your design firm and refers to your Sep 8th proposal giving to you.

Custom Gopuram per dimensions on drawing dated Aug 29th by MWM Design Group on 8-29-08.

\$ 38,717.00 (Note: top portion/finial not included...see alternate C below)

Alternate A

Custom Corner Pavilions per dimensions on drawing.

\$ 15,369.00

Alternate C

Finial (top portion)

\$ 6,735.00

1. Price includes delivery to jobsite.
2. Tubular steel framework and anchoring collars as needed
3. Rust inhibitive paint included.
4. ArmorGuard gel-coat (low-styrene to prevent color shift) by Cook Composites included.
5. One std FSI color included. Consult INDesign for custom color options, if needed?
6. Fiberglass by Vortex.
7. One TX Engineering Seal included
8. All design and lifting and anchoring details to be provided once order is placed.
9. Terms: 25% deposit to begin; 25% before production begins, balance before shipping.
10. \$ 3,500. deposit to begin drawings and design work by our Architect.

Thank you and please let me know when you have questions or comments?

David Calloway

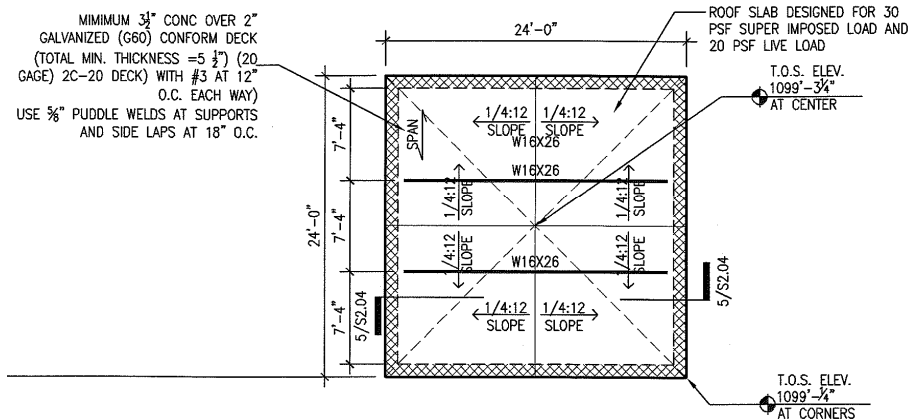
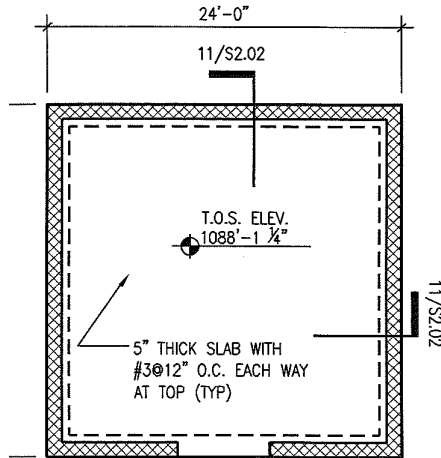
INDesign (903) 330-7993
david@indesignarch.com

INDesign - PO Box 555 - Tyler TX 75710

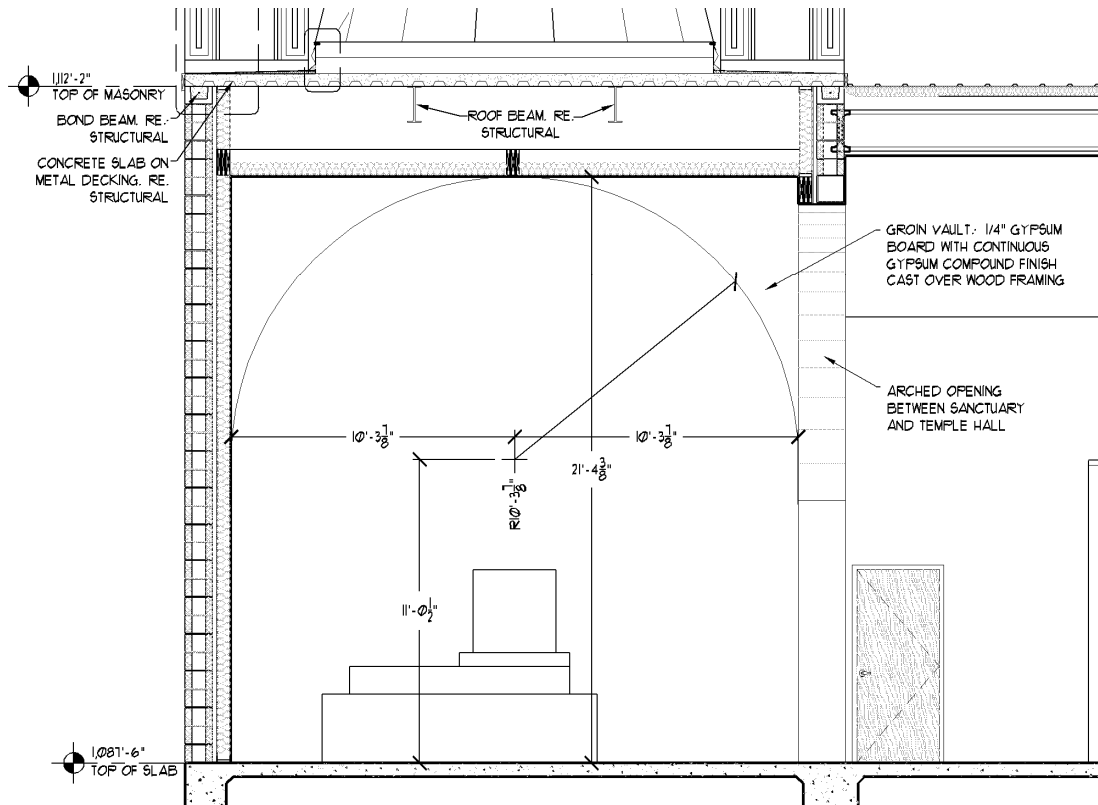
(903) 330-7993

david@indesignarch.com

8. How are the brass finials structurally supported? What is the required mounting plate? How are they flashed and waterproofed? The details for mounting the brass finials are part of the gopuram manufacturer's scope, per the above proposal.
9. Elevations of doors #1 & #2 show a transom above. Details? Specs?
10. Detail 3/A302 calls for a site fabricated steel crown. This only appears on Elevation Sheet A200 and not on the Elevations shown on Sheet A201. Provide details and dimensions. The "crown" is a piece of ornamental trim. As the elevations show, this trim only appears on the front of the entry canopy, and not on the sides (where it would interfere with drainage). This element is 10' long, with the exposed portion being 6" high. Assume for pricing purposes that it is fabricated from a single piece of 14 Gauge galvanized steel sheet (note that the exposed edges must be galvanized after cutting) mechanically secured to the curbing shown in Detail 3/A302. Note also that the roof of the entry canopy is not metal panels, but rather membrane (to match the portico roof) over 3/4" plywood sheathing.
11. Meditation chapel is not noted on the structural drawings, no slab or bar joist information is given. The foundation and roof framing plans for the meditation hall are provided below.



12. Cabinet details and materials are not noted on the plans. Specs are noting both plastic laminate and hardwood. Plastic laminate (selected from the approved manufacturer's complete range of standard colors) shall be utilized on all exposed surfaces of all millwork, unless expressly noted otherwise.
13. The plans are noting fireplace manufacturer specifications for components. No manufacturer is listed in the bid documents. The fireplaces detailed in the construction drawings illustrate components available from the Superior Clay Corporation of Uhrichsville, Ohio (www.superiorclay.com: 800-848-6166) and the Buckley Rumford Company of Port Townsend, Washington (www.rumford.com: 360-385-9974).
14. There is no specification listed for the Marble Tile noted on the plans. The marble to be used in flooring the temple hall and constructing the dais in the sanctuary will be furnished by the owner. It will be arriving in slabs sized 4'x7'; 8'x2'-8"; and 7'x2'-4"; all 5/8" thick. The contractor's scope will include cutting and installing the marble.
15. The Shrine shows ornamental metal work, this needs more information. See response to RFI 7, above.
16. There is no foundation plan shown for the shrine. Assume that the shrine foundation will be detailed per the meditation hall foundation, shown above.
17. The groin vault shown in the Sanctuary shows to be open on the Temple side according to Section 1/A301. This conflicts with Section 2/A300. Please clarify. There is an arched opening between the temple hall and the sanctuary. This is correctly shown on Sheets A301 and A300. The following detail clarifies this condition (note the revision of certain dimensions relative to the bid set, and the amendment of the note concerning the gypsum sheathing of the vaulted ceiling).



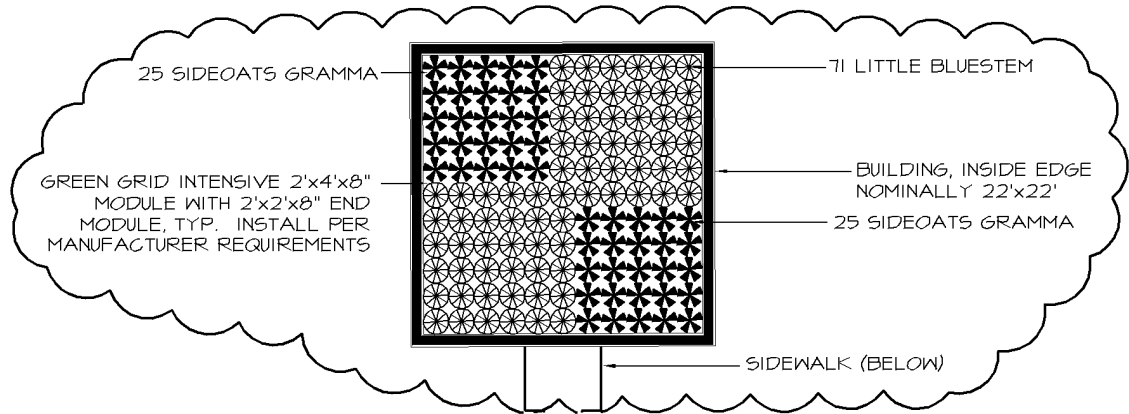
18. *What is the roof pitch on the metal roof portions of the project? What is the overhang on the Shrine?* The pitch for the metal roofs is 4:12, as noted on Sheet A103. The overhang for the shrine is 2'-0" (24").
19. *There are no lumber specs in the specifications. Specification Section 06100 Carpentry is included with this addendum.*
20. *Detail 9/A302 shows a 6x6 TS column wrapped by a fiberglass column. The TS column does not appear on the Structural Drawings. What is the imbed requirement? Is the saddle connection to the triple 2x beam hot-dipped galvanized? What type of fiberglass column?? How is it waterproofed at the top cap to TS connection? Assume that the TS columns are secured at the base with brackets and stainless steel expansion anchor bolts: two per column. The entire column assembly, including the saddle connection and the mounting brackets, should be hot-dip galvanized. The columns themselves should be 12" x 9' non-tapered square columns with Tuscan bases and caps, equal to the Poly-Classic series manufactured by Colonial Columns (877-681-0044: www.colonialcolumns.com). There is no waterproofing associated with the column installations: the fiberglass column covers will be open to the top to vent (this opening is protected from the weather by the roof above) and at the bottom to drain.*
21. *Detail 10/A302 states "Re. Manufacturer Spec. for Growing Medium, Vegetation, and Waterproofing Barriers". What manufacturer? This needs to be completely specified. The notation on this detail is misleading. The components of the green roof system are as follows. The actual roof is a TPO membrane over tapered insulation, per Specification 07540.*

1. Green Roof shall have the following requirements

- a. Provide green grid 2' x 4' x 8" modules with 2' x 2' x 8" end piece modules.
- b. Provide 71 Little Bluestem and 50 Sideoats Grama (24" on center, square spacing).
- c. Provide 3" mulch for all landscape areas within the green grid area
- d. Install green grid and landscaping as recommended by manufacturer.
- e. Contact for green grid:
David Dippel
Austin Office
Phone: (512) 651-7146
Fax: (512) 651-7101
David.Dippel@greengridroofs.com

2. Provide drip irrigation for green roof

- a. Inline drip tube with emitters 12" on center.
 - i. Space drip tube 12" apart and not further than 6" from inside edge of parapet (similar to Hunter drip line).
 - ii. Install drip tube below mulch
- b. Add one irrigation zone for green roof (Zone 23)
- c. Provide 150 mesh wye filter and inline pressure regulator, 40 psi max (similar to Hunter drip zone kit)
- d. Irrigation lateral (3/4") shall run on outside of building, within copper 1-1/2" irrigation sleeve
- e. Install one irrigation valve (Zone 24) to automatically drain vertical irrigation lateral to surface. Add splash block for drain.



GREEN ROOF PLAN (MEDITATION ROOM)

1" = 10'-0"

22. The Elevation of the Meditation Chapel on Sheet A202 shows roof drain pipes at all 4 corners of the building. What type of pipe and what size? How is it detailed? The pipe is 5" diameter galvanized steel tube. The corner blocks will be cored to accommodate the tubes, which will be grouted in place.
23. The Sanctuary Plan, 1/A304, shows what appears to be a sloping floor to floor drains. This information is not conveyed on the Foundation Plan or the Plumbing Plans. This area needs more detailing and coordination. The drains in question are within the raised dais. The associated slopes will be achieved within the setting beds of the marble facing in order to permit each level of the dais to drain.
24. Please provide a toilet accessories schedule. The toilet accessory schedule for the project is included below.

WASHROOM ACCESSORY SCHEDULE		
ID	DESCRIPTION	SPECIFICATION
PTD	TOWEL DISPENSER	RECESSED COMBINATION TOWEL DISPENSER AND WASTE RECEPTACLE FABRICATED OF TYPE 304 STAINLESS STEEL WITH EXPOSED SURFACES IN SATIN FINISH. CABINET DOOR OF 18 GAUGE SS WITH FULL-LENGTH CONCEALED PIANO HINGE, SECURED 2 TUMBLER LOCKS. TOWEL DISPENSER CAPACITY 600 C-FOLD TOWELS. REMOVABLE 4.9 GAL. LEAKPROOF MOLDED PLASTIC INSERT FOR WASTE RECEPTACLE. OVERALL DIMENSIONS 13"W x 55"H x 6"D. BRADLEY MODEL 2011 OR APPROVED EQUAL.
MIR	MIRROR	MIRROR FRAMED WITH ONE-PIECE ROLL FORMED 3/4" x 3/4" STAINLESS STEEL ANGLE WITH CONTINUOUS INTEGRAL STIFFENER. WELDED CORNERS TO BE POLISHED TO A UNIFORM SATIN FINISH. MIRROR TO BE FIRST QUALITY 1/4" FLOAT GLASS GUARANTEED FOR AT LEAST 15 YEARS AGAINST SILVER SPOILAGE. PROTECTED BY A SHOCK ABSORBING NEOPRENE TUBE. BACK OF UNIT TO BE 20-GAUGE GALVANIZED STEEL SECURED TO FRAME WITH CONCEALED SCREWS. EQUIPPED WITH INTEGRAL HORIZONTAL HANGING BRACKETS AND SEPARATE WALL HANGER FOR CONCEALED MOUNTING. MIRROR DIMENSIONS TO BE 24" x 36". BRADLEY MODEL 180 OR APPROVED EQUAL.
SD	SOAP DISPENSER	SURFACE-MOUNTED LIQUID SOAP DISPENSER FABRICATED FROM 20 GA. SATIN-FINISH STAINLESS STEEL. OVERALL DIMENSIONS 4 13/16"W x 8 3/16"H x 2 1/8"D. BRADLEY MODEL 6962 OR APPROVED EQUAL.
TPD	TOILET PAPER DISPENSER	SURFACE-MOUNTED DUAL ROLL TOILET TISSUE DISPENSER FABRICATED FROM HEAVY-GAUGE SATIN-FINISHED STAINLESS STEEL TO HOLD TWO STANDARD CORE TOILET TISSUE ROLLS. OVERALL DIMENSIONS 5 3/16"W x 10 3/8"H x 5 5/16"D. BRADLEY MODEL 5402 OR APPROVED EQUAL.
PPC	PROTECTIVE PIPE COVER	ADA-COMFORMING, MOLDED VINYL, ANTIMICROBIAL UNDERSINK PROTECTIVE P-TRAP AND ANGLE VALVE COVERS. COVERS SHALL BE SECURED WITH FLUSH REUSABLE FASTENERS. ANGLE STOPS SHALL HAVE LOCKING ACCESS COVERS.
GB-1 GB-2 GB-3	GRAB BAR -36" GRAB BAR -42" GRAB BAR -SHOWER	ADA AND TAS COMPLIANT 1 1/2" DIAMETER, 18 GAUGE STAINLESS STEEL GRAB BAR FABRICATED TO MEET THE REQUIREMENTS OF ASTM F446-85 WITH 1-1/2" CLEARANCE AND COMPLY WITH ANSI A117.1-1996. PROVIDE WOOD BLOCKING IN WALLS AS REQUIRED.
DT	DRESSING TABLE	ADA AND TAS COMPLIANT DRESSING TABLE. SOLID PHENOLIC TOP MEASURES 24"D x 48"W. STAINLESS STEEL FOLDING FRAME (18 GA. TUBING) SECURED TO WALL WITH THREE MOUNTING FLANGES. 420 LB. (MINIMUM) CAPACITY CERTIFIED BY FABRICATOR.

25. *A107/Office – 4 windows are shown, only 3 are noted on the Window Schedule.* The fourth window is a transaction window that should be priced as C.R. Laurence catalog number SCW103N: a 30"x30" cashier's window with tempered 1/4 inch clear glass window surrounded by satin finish aluminum frame. A speak-through is supplied with the window, which is mounted on an 18 gauge stainless steel shelf with recessed coin and cash tray.
26. *Detail 3/A300 Homa Kunda shows 2- 10" diameter pipes. What material are the pipes? How are they detailed as they exit the Building?* The pipes shown are conventional cast iron soil pipe. The pipes should terminate with the mouth of the bell of the last segment flush with the face of the concrete grade beam. The open ends of the two pipes should be provided with inserts (Neenah R-4373-10 or equal).
27. *Is there a dimensional control plan for the civil drawing set?* We will make electronic copies of the civil plans available for construction.
28. *There is a discrepancy between the geo-technical report and the details shown on 5/C791 & 6/C791. Which of these will govern?* Details 5/C791 and 6/C791 shall be amended to reflect the pavement recommendations contained in the sealed Geotechnical Report issued 29 October 2008.
29. *What size is the marble tile and what type of joint will be used?* Refer to response to Question 14, above. The marble will be thinset, with conventional grout joints.
30. *Sheets A/200, A/201, and A/202 reference integrally colored CMU, 25% typical. Does this percentage apply to all CMU blocks to be installed, or is this note referring to the blocks that are graphically shown a different color.* All block used for the project shall be integrally colored. See response to Question 31, below.
31. *Specification section 04810, part 2.1, paragraph 5 refers to two different types of masonry products: ground finish and split-face finish. What is the percentage of finish to be used on this project? Two types of block will be used for this project: conventional smooth-faced (integrally colored and waterproofed) block and split face (integrally colored and waterprorrfd) block. Split face block shall be installed in the areas shown shaded on the elevations. All other block shall be smooth-faced.*

CARPENTRY

SECTION 06100

PART 1 - GENERAL

- 1.1 RELATED DOCUMENTS
 - A. Drawings and general provisions of the Contract, including General and Supplementary Conditions and Division 1 Specification Sections, apply to this Section.
- 1.2 SUMMARY
 - A. This Section includes the following:
 1. Framing with dimension lumber.
 2. Wood furring, grounds, nailers, and blocking.
 3. Sheathing.
 4. Underlayment.
- 1.3 DEFINITIONS
 - A. Exposed Framing: Dimension lumber not concealed by other construction and indicated to receive a stained or natural finish.
- 1.4 SUBMITTALS
 - A. General: Submit each item in this Article according to the Conditions of the Contract and Division 1 Specification Sections.
 - B. Product Data for the following products:
 1. Underlayment.
 2. Insulating sheathing.
 3. Air-infiltration barriers.

4. Metal framing anchors.
 5. Construction adhesives.
 - C. Material certificates for dimension lumber specified to comply with minimum allowable unit stresses. Indicate species and grade selected for each use and design values approved by the American Lumber Standards Committee's (ALSC) Board of Review.
 - D. Material test reports from a qualified independent testing agency indicating and interpreting test results relative to compliance of fire-retardant-treated wood products with requirements indicated.
 - E. Research or evaluation reports of the model code organization acceptable to authorities having jurisdiction that evidence the following products' compliance with building code in effect for Project.
 1. Air-infiltration barriers.
 2. Metal framing anchors.
 3. Power-driven fasteners.
 4. Fire-retardant-treated wood.
- 1.5 DELIVERY, STORAGE, AND HANDLING
- A. Keep materials under cover and dry. Protect from weather and contact with damp or wet surfaces. Stack lumber, plywood, and other panels. Provide for air circulation within and around stacks and under temporary coverings.
 1. For lumber and plywood pressure treated with waterborne chemicals, place spacers between each bundle to provide air circulation.

PART 2 - PRODUCTS

2.1 MANUFACTURERS

- A. Available Manufacturers: Subject to compliance with requirements, manufacturers offering products that may be incorporated into the Work include, but are not limited to, the following:
 1. Air-Infiltration Barriers:
 - a. Amoco Foam Products Co.
 - b. Anthony Industries, Inc.; Simplex Products Division.
 - c. Celotex Corporation (The); Building Products Division.
 - d. DuPont Company; Fibers Department.
 - e. Parsec, Inc.
 - f. Raven Industries, Inc.
 - g. Reemay, Inc.
 - h. Sto-Cote Products, Inc.
 2. Metal Framing Anchors:
 - a. Cleveland Steel Specialty Co.
 - b. Harlen Metal Products, Inc.
 - c. Silver Metal Products, Inc.
 - d. Simpson Strong-Tie Company, Inc.
 - e. Southeastern Metals Manufacturing Co., Inc.

2.2 LUMBER, GENERAL

- A. Lumber Standards: Comply with DOC PS 20, "American Softwood Lumber Standard," and with applicable grading rules of inspection agencies certified by ALSC's Board of Review.
- B. Grade Stamps: Provide lumber with each piece factory marked with grade stamp of inspection agency evidencing compliance with grading rule requirements and identifying grading agency, grade, species, moisture content at time of surfacing, and mill.
- C. Where nominal sizes are indicated, provide actual sizes required by DOC PS 20 for moisture content specified. Where actual sizes are indicated, they are minimum dressed sizes for dry lumber.
 1. Provide dressed lumber, S4S, unless otherwise indicated.
 2. Provide lumber with 15 percent maximum moisture content at time of dressing for 2-inch nominal (38-mm actual) thickness or less, unless otherwise indicated.

2.3 DIMENSION LUMBER

- A. General: Provide dimension lumber of grades indicated according to the ALSC National Grading Rule (NGR) provisions of the inspection agency indicated.
- B. Exterior (Exposed) Framing:
 1. Grade: No. 2 (or better).
 2. Species: Western cedars; WCLIB, or WWPA.
- C. Exterior (Exposed) Trim:
 1. Grade: No. 2 (or better).
 2. Species: Western cedars; WCLIB, or WWPA.
- D. Plywood:

1. APA C-C Plugged, Group 1, Exterior (or better).
- E. Joists, Rafters, and Other Framing Not Listed Above: Construction or No. 2 grade and any of the following species:
1. Douglas fir-larch; WCLIB or WWPA
 2. Hem-fir; WCLIB or WWPA.
 3. Western woods; WCLIB or WWPA
- 2.4 MISCELLANEOUS LUMBER
- A. General: Provide lumber for support or attachment of other construction, including rooftop equipment curbs and support bases, cant strips, bucks, nailers, blocking, furring, grounds, stripping, and similar members.
 - B. Fabricate miscellaneous lumber from dimension lumber of sizes indicated and into shapes shown.
 - C. Moisture Content: 19 percent maximum for lumber items not specified to receive wood preservative treatment.
- 2.5 FASTENERS
- A. General: Provide fasteners of size and type indicated that comply with requirements specified in this Article for material and manufacture.
 1. Where rough carpentry is exposed to weather, in ground contact, or in area of high relative humidity, provide fasteners with a hot-dip zinc coating per ASTM A 153 or of Type 304 stainless steel.
 - B. Nails, Wire, Brads, and Staples: FS FF-N-105.
 - C. Power-Driven Fasteners: CABO NER-272.
 - D. Wood Screws: ASME B18.6.1.
 - E. Lag Bolts: ASME B18.2.1. (ASME B18.2.3.8M)
 - F. High-Strength Bolts, Nuts & Washers: ASTM A325 (ASTM A325M), Type 1, heavy hex steel structural bolts, heavy hex carbon-steel nuts, and hardened carbon-steel washers.
- 2.6 METAL FRAMING ANCHORS
- A. General: Provide galvanized steel hangers and framing anchors of structural capacity, type, and size indicated and as recommended by the manufacturer for each use.
 - B. Galvanized Steel Sheet: Hot-dip, zinc-coated steel sheet complying with ASTM A 653, G60 (ASTM A 653M, Z180) coating designation; structural, commercial, or lock-forming quality, as standard with manufacturer for type of anchor indicated.
- 2.7 MISCELLANEOUS MATERIALS
- A. Water-Repellent Preservative: NWWDA-tested and -accepted formulation containing 3-iodo-2-propynyl butyl carbonate (IPBC) as its active ingredient.
- PART 3 - EXECUTION
- 3.1 INSTALLATION, GENERAL
- A. Discard units of material with defects that impair quality of carpentry and that are too small to use with minimum number of joints or optimum joint arrangement.
 - B. Set carpentry to required levels and lines, with members plumb, true to line, cut, and fitted.
 - C. Fit carpentry to other construction; scribe and cope as required for accurate fit. Correlate location of furring, nailers, blocking, grounds, and similar supports to allow attachment of other construction.
 - D. Apply field treatment complying with AWPA M4 to cut surfaces of preservative-treated lumber and plywood.
 - E. Securely attach carpentry work to substrate by anchoring and fastening as indicated, complying with the following:
 1. CABO NER-272 for power-driven staples, P-nails, and allied fasteners.
 2. Published requirements of metal framing anchor manufacturer.
 3. "Table 23-I-Q--Nailing Schedule" of the Uniform Building Code.
 - F. Use common wire nails, unless otherwise indicated. Use finishing nails for finish work. Select fasteners of size that will not fully penetrate members where opposite side will be exposed to view or will receive finish materials. Make tight connections between members. Install fasteners without splitting wood; predrill as required.
 - G. Use hot-dip galvanized or stainless-steel nails where rough carpentry is exposed to weather, in ground contact, or in area of high relative humidity.
 - H. Countersink nail heads on exposed carpentry work and fill holes with wood filler.
- 3.2 WOOD FRAMING, GENERAL
- A. Framing Standard: Comply with UBC standards for structural framing unless otherwise indicated.
 - B. Install framing members of size and at spacing indicated.
 - C. Do not splice structural members between supports.
- 3.3 JOIST FRAMING
- A. General: Install joists with crown edge up and support ends of each member with not less than 1-1/2 inches (38 mm) of bearing on wood or metal, or 3 inches (76 mm) on masonry. Attach joists as follows:
 1. Where supported on wood members, by toe nailing or by using metal framing anchors.

2. Where framed into wood supporting members, by using wood ledgers as shown or, if not shown, by using metal joist hangers.
- B. Do not notch in middle third of joists; limit notches to 1/6 depth of joist, 1/3 at ends. Do not bore holes larger than 1/3 depth of joist; do not locate closer than 2 inches (50 mm) from top or bottom.
- C. Provide solid blocking of 2-inch nominal (38-mm actual) thickness by depth of joist at ends of joists unless nailed to header or band.
- D. Provide bridging of type indicated below, at intervals of 96 inches (2438 mm) o.c., between joists. Face nail to ends of parallel rafters.
 1. Diagonal wood bridging formed from bevel cut 1-by-3-inch nominal- (19-by-64-mm actual-) size lumber, double-crossed and nailed both ends to joists.
 2. Steel bridging installed to comply with bridging manufacturer's written instructions.
- E. Rafters: Notch to fit exterior wall plates and toe nail or use metal framing anchors. Double rafters to form headers and trimmers at openings in roof framing, if any, and support with metal hangers. Where rafters abut at ridge, place directly opposite each other and nail to ridge member or use metal ridge hangers.
 1. At valleys, provide double-valley rafters of size shown or, if not shown, of same thickness as regular rafters and 2 inches (50 mm) deeper. Bevel ends of jack rafters for full bearing against valley rafters.
 2. At hips, provide hip rafter of size shown or, if not shown, of same thickness as regular rafters and 2 inches (50 mm) deeper. Bevel ends of jack rafters for full bearing against hip rafter.
- F. Provide special framing as shown for eaves, overhangs, dormers, and similar conditions, if any.

END OF SECTION 06100